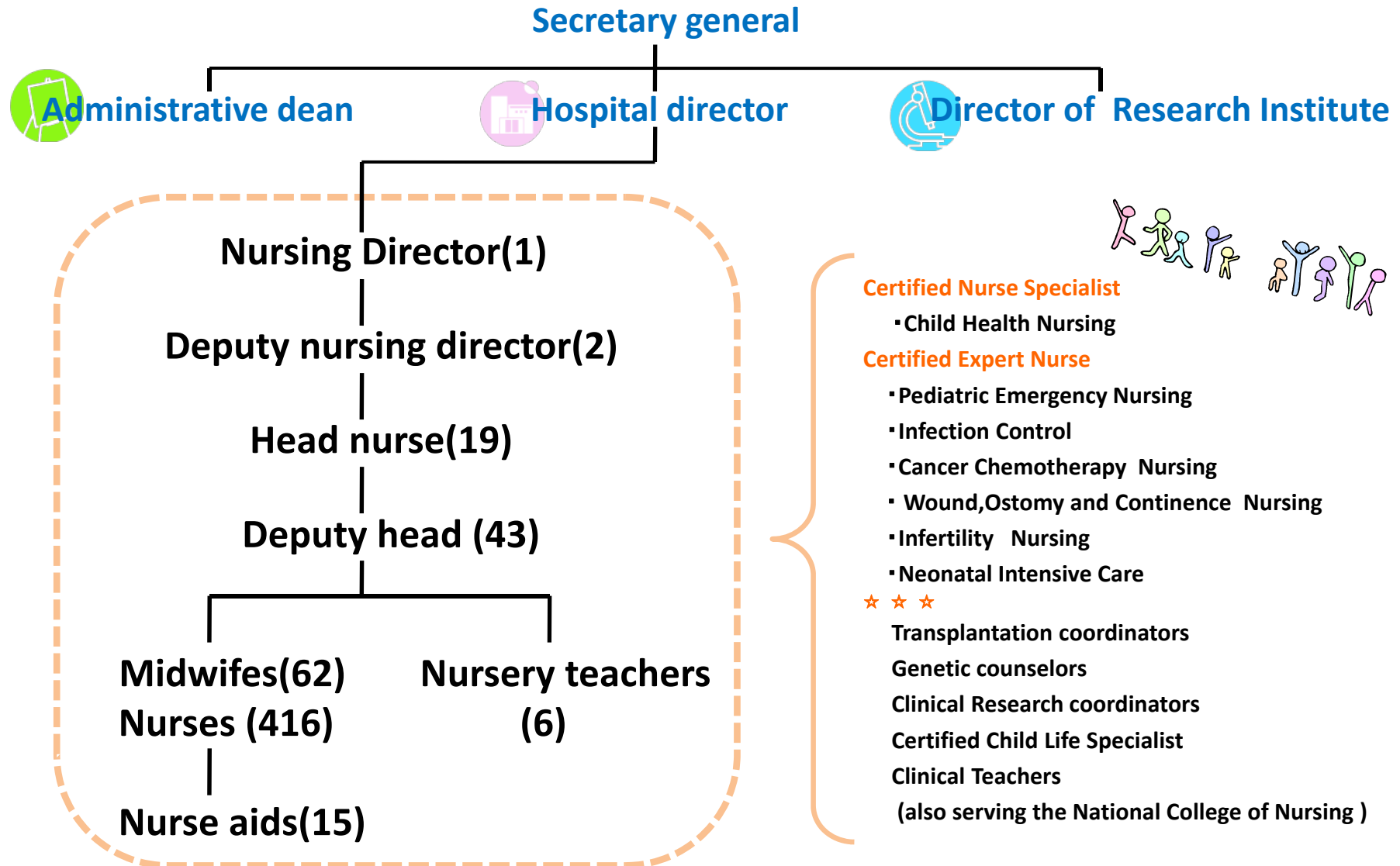


Nursing department organization



Activities of NCCHD



12,700/year
NICU (40beds)



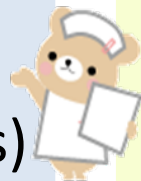
390/day
14Wards (460beds)



6,000/year
PICU (20beds)



4,700/year
Operation (9rooms)



1000/day
Outpatients



31,000/year
Emergency

Maternal and Perinatal ward

In this ward, we are providing nursing care for women in pregnancy, delivery, puerperal and newborns.



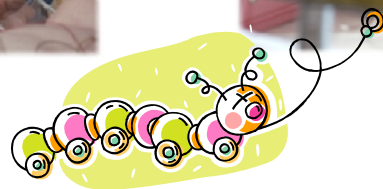
Delivery: 1,700/year

6 LDR(Labor, Delivery, Recovery) rooms



Nursing practices in Pediatric Ward

Coordinated care with nursing and nursery to promote patient's growth.



Tokyo Metropolitan Children's Medical Center




*The view of Mt. Fuji
(for west of the hospital)*

Tama Medical Center

Children's Medical Center

2-8-29 Musashidai, Fuchu-shi, Tokyo, Japan
<http://www.byouin.metro.tokyo.jp/shouni/>

since March 1. 2010



The Mission of our hospital

- A center of pediatric care in Tokyo
- Medical treatment that centers in children
- Medical treatment that unifies mind and body
- Medical treatment considering on growth and development of children
- Medical treatment cooperating with society



The Mission of our Nursing Department

- We esteem the personality of each child who carries the future, and provide specialized nursing care in high quality that brings up children's growth and development.
- We offer children a safe, comfortable nursing in cooperation with the medical team and the family.
- Each nurse demonstrates flexible ideas and creativity for improving the nursing.

Nursing at our hospital

- We offer total nursing which unifies mind and body in cooperation with medically staff.
- We have a skill for nursing patients, not only in general, speciality, and psychiatry wards but also in an emergency room and a pediatric intensive care unit.
- We care for patients during childhood, from a premature baby to a junior High school students. We can also contribute in transferring patients from our hospital to adult one.
- We educate continuously nurse who can work in our hospital which is a center for pediatric care in Tokyo, especially Tama area.



Nursing Department